



**Tung Jinn
Abrasive**

tungjinn.com.tw

EST.1972



東進砂布廠股份有限公司
Tung Jinn Abrasive Co., Ltd.

Contents

01 ABOUT

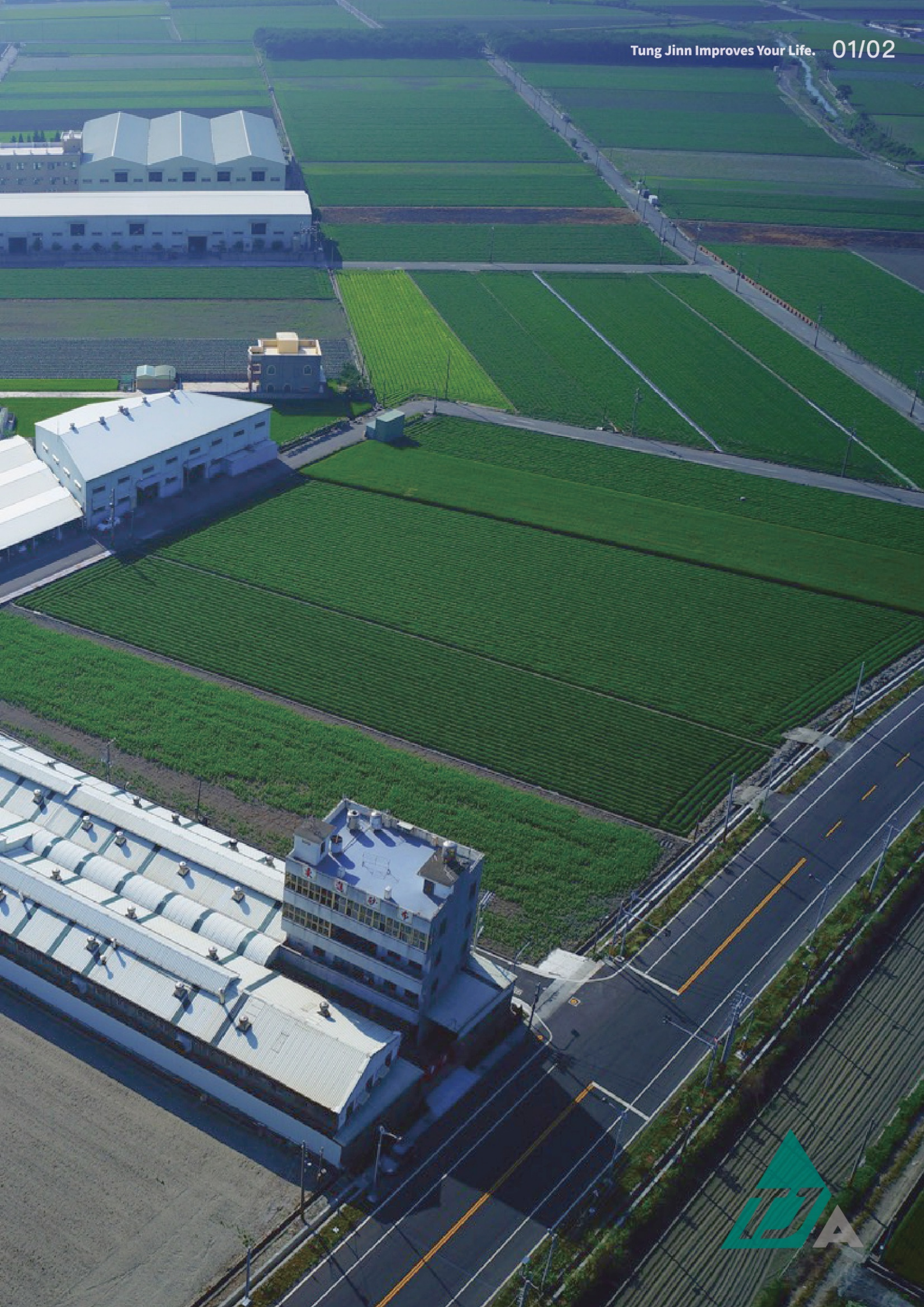
- 03 企業理念 Company Mission
- | 歷史沿革 Timeline
- 05 專業技術 Technology
- | 證書認證 Certificate authentication
- 06 企業優勢 Business advantage
- | 機器設備 Machine Facilities
- | 品質管理 Quality management

02 APPLICATION

- 07 產品應用 Product Application

03 OUR PRODUCTS

- 09 砂布產品 Abrasive Cloth
- 18 砂紙產品 Abrasive Paper
- 22 止滑產品 Anti Slip Tape



深耕台灣，佈局全球。

開拓創新，與時俱進。

About

企業理念 Company Mission

東進懷抱創建美好世界之初衷，以精湛技術和優異性能竭誠滿足客戶需求。在舒適高效的工作環境中不斷加強對研發、品質、服務等項目的管理，提高公司應對外在環境挑戰的能力、提供客戶更好的產品與服務，致力達成「品質第一，客戶滿意」信念，使全球每一個角落、每一個人生，皆能更加圓滿精彩。

Tung Jinn has devoted itself, with the original ambition of building up a better world, to Customers' satisfactions by utilizing the best technology and superior efficacy. For upgrading company's market and in the external competitiveness, and providing customers for the better service and products, we enhanced management of research & development, quality and service in the highly efficient workplace. It is our belief, based on our pursuit of "Quality First, Customer Satisfaction First", we may enrich people's life all over the world to their ultimate fulfillment.

東進砂布廠股份有限公司
Tung Jinn Abrasive Co., Ltd.

1977 設置第一條生產線，並更名為『東進砂布廠有限公司』。

The first production line was established and the company name had been changed to "Tung Jinn Abrasive Ltd."

1981 購置第一台底布處理機，開始生產砂布基材，且轉型為砂布製造商，生產半樹脂砂布。

The first backing fabric processor was procured; whereas the company has transferred into the sand abrasive manufacturer for production of base materials for semi-resin abrasive cloths.

1991 獲頒中華民國經濟部中央標準局正字標記。

Awarded with CNS Mark by National Bureau of Central Standards, Ministry of Economic Affairs.

1999 擴建廠房，進口最新設備，並成為台灣最具規模砂布專業生產工廠。

Factory Expansion, with the imported new facility to become the most well established professional manufacturer of Abrasive Papers.

歷史沿革 Timeline



1972 『東興砂布廠有限公司』成立於嘉義縣六腳鄉蘇厝寮。

"Tung Hsin Abrasive Ltd." was established in Sucuoliao, Liujiao Township, Chiayi County.

1978 建新廠，遷址於：雲林縣北港鎮樹腳里過溝81號(現址)。

The new factory has been built up and moved to the current address of "No. 81, Guogou, Shujiao Village, Beigang Township, Yunlin County."

1982 增資、擴建廠房、增建設備及提升生產品質，並更名「東進砂布廠股份有限公司」。

The company has been undertaking Capital Increase, Factory Expansion, Facility Additions and Quality Upgrade and changed the company name into "Tung Jinn Abrasive Co., Ltd."

1996 導入ISO9000品質管理制度並榮獲ISO9002認證。

Introduced in ISO9000 QC System and certified with ISO9002.



品質第一
客戶滿意

提高效率
共創雙贏



產品優化
技術創新



服務 創新 雙贏

2002 研發PCB用精密砂布。

Micro-Mesh Cushioned Abrasive Sheets for PCB was developed.

2011 新增網版印刷機。

Purchasing screen printing machine.

2017 擴建廠房，並購入新設備，新柔軟機，噴墨印刷機。

Factory Expansion, also purchased Abrasive Flexing Machine, and Ink jet Printing machine.

2019 研發碳化矽手撕砂布。

Developed Shop Roll (Silicon Carbide).

2001 ISO9001品質系統改版作業完成。

The revision of ISO9001 Quality System was completed.

2008 擴建廠房。

Purchasing laser cutting machine.

2012 研發製造防阻塞砂紙。

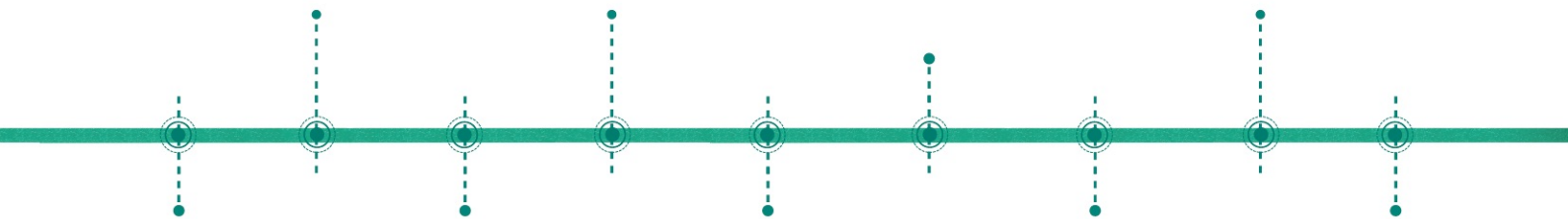
Block-proof Abrasive Papers had been developed for production.

2018 購入雷射切割機。

Laser cutting machine.

2020 研發圖案浴室防滑貼。

Pattern anti slip tape for indoor usage.



為立穩市場奠基。
追求品質、堅持初衷，

專業技術 Technology

- 有優良的團隊及設備。
- 產品技術以自行開發及國外引進為二主軸，依市場需求改善及開發新產品可依客戶的需求，提供最佳的品質服務。
- Good team and equipment.
- Product technology is mainly based on self-development and introducing from abroad. Products improved and developed according to market demand, provide the best quality service to meet customer requirement.

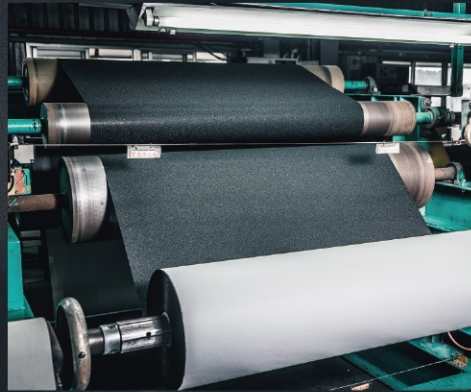
證書認證 Certificate authentication

- 1991年獲頒中華民國經濟部中央標準局正字標記。
- 1996年榮獲國際標準局品質管理系統認證(ISO9000)。
- 2002年榮獲中華民國經濟部標準檢驗局品質管理系統驗證證書(ISO 9001:2015 /CNS 12681)。
- 產品通過歐盟REACH、ROHS、美國EN-71-3、PBT物質檢測以及通過SGS各項安全檢測數據報告。
- 1991 Awarded with CNS Mark by National Bureau of Central Standards Ministry of Economic Affairs.
- 1996 Certified with ISO9000 QC System.
- 2002 Certified with ISO9001: 2015 / CNS 12681 by National Bureau of Central Standards, Ministry of Economic Affairs.
- The products have passed EU REACH, ROHS, US EN-71-3, PBT substance testing and SGS safety Test data report.



企業優勢 Business advantage

- 以漂亮價格提供好品質的服務及安全，差異性產品滿足及創造客人需求
- 堅持誠信理念
- 不允諾達不到的承諾
- 品質保證
- 交貨速度快
- Providing good quality service and safety at a good price and differentiated product meeting extremely creative customer needs.
- Adhere to the principle of integrity
- Commitments Not Accepted
- Quality Assurance
- Fast delivery speeds

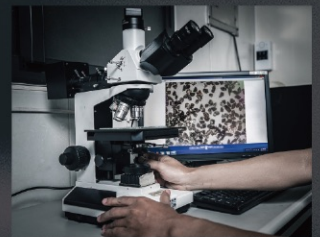


機器設備 Machine Facilities

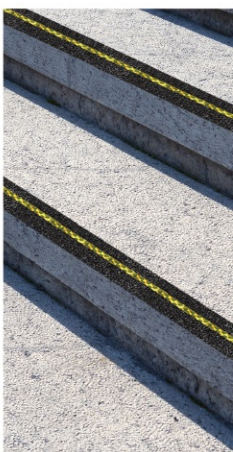
- | 布處理機 Cloth Preprocess Machine
- | 主要生產線 Main Manufacturing Machine
- | 切片機 Slicing Machine
- | 複捲機 Re-rolling Machine
- | 沖型機 Punching Machine
- | 分捲機 Slitting Machine
- | 砂布環帶加工機 Belt Converting Machine
- | 砂布柔軟機 Abrasive Flexing Machine

品質管理 Quality management

- 公司依據ISO9001品質管理系統之要求，制定「品質管理系統」並規劃制定，實施及持續改善品質系統，以落實產品品質管制。
- 以「品質第一，客戶滿意」的品質改善政策為目標，落實品質系統的推動與實施，以專業的技術能力及優良的產品品質，提供客戶最佳的品質服務。
- According to the requirements of the ISO9001 quality management system, the company formulates a "quality management system" and plans, implements and continuously improves the quality system to include product quality control.
- Taking the quality improvement policy of "Quality First, Customer Satisfaction" as the goal, pursuing the promotion and implementation of the quality system, and providing customers with the best quality service with professional technical capabilities and excellent product quality.

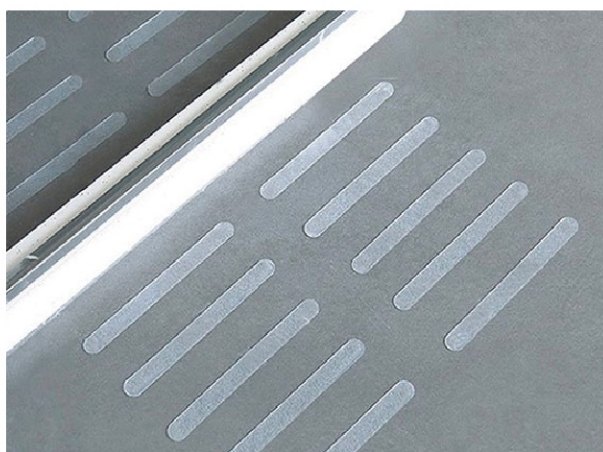
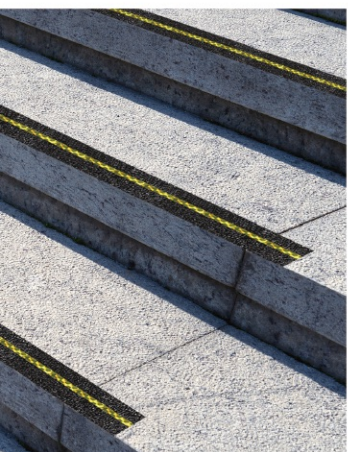


Application



東進，讓人們生活更美好。
Tung Jinn Improves Your Life.

A



ABRASIVE CLOTH 砂布產品

多元完備品項，提供拋光研磨市場廣泛需求。

A diversity of products to fulfill the market requirements for grinding and polishing.

ABRASIVE TOUGH CLOTH

硬性 + 砂布帶

01




型號 (ITEM) : TR332P

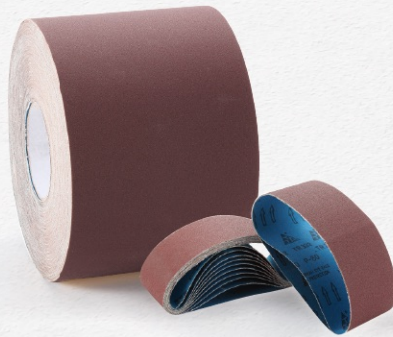
基材(Backing) : Y-WT Cloth (T/C) 磨料(Grain) : 氧化鋁 Aluminum Oxide
 植砂(Coating Density) : 密植砂 Close Coated 寬度(Width) : 1370mm
 粒號(Grit) : 320#~1000#

應用(Application) :

適用於PCB電子線路板、不鏽鋼板等研磨, 可乾濕磨。

Suitable for Printed Circuit Board (PCB), metal, stainless steel and can be used in wet or dry sanding.

 砂捲帶 Roll  環帶 Belt





型號 (ITEM) : TR332

基材(Backing) : Y-WT Cloth (T/C) 磨料(Grain) : 氧化鋁 Aluminum Oxide
 植砂(Coating Density) : 密植砂 Close Coated 寬度(Width) : 1400mm
 粒號(Grit) : 40#~600#

應用(Application) :

適用於不鏽鋼、金屬製品、硬木製品、合板、紡織業等研磨；可乾濕磨。

For stainless steel, metal working, woodware, plywood and textile. It also can be used in wet and dry sanding.

 砂捲帶 Roll  環帶 Belt  砂布輪 Flap Wheel



型號 (ITEM) : TR333 (KMT)

基材(Backing) : Y-WT/H-WT Cloth (T/C) 磨料(Grain) : 氧化鋁 Aluminum Oxide
 植砂(Coating Density) : 密植砂 Close Coated 寬度(Width) : 1400mm
 粒號(Grit) : 40#~400# (非標準粒度 Non-standard size)

應用(Application) :

適用於不鏽鋼, 金屬製品, 硬木製品, 合板, 等研磨。

For stainless steel, metal working, woodware and plywood.

 砂捲帶 Roll  環帶 Belt

02
03
04
05
06
07
08

砂
布
產
品

Abrasive Cloth



ABRASIVE TOUGH CLOTH



型號(ITEM) : TR62

基材(Backing) : Y-WT (T/C)

磨料(Grain) : 氧化鋁Aluminum Oxide

植砂(Coating Density) : 半密植砂Semi Open


寬度(Width) : 1400mm


粒號(Grit) : 40#~400# (非標準粒度 Non-standard size)

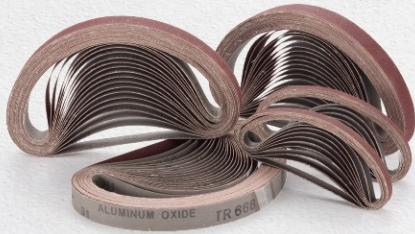
應用(Application) :

適用於木製品,傢俱,合板等研磨。

General purpose of wood working, furniture and plywood.

 砂捲帶 Roll

 環帶 Belt



型號(ITEM) : TR666A

基材(Backing) : J-WT Cloth (T/C)

磨料(Grain) : 氧化鋁Aluminum Oxide

植砂(Coating Density) : 半密植砂Semi Open


寬度(Width) : 1345mm


粒號(Grit) : 36#~400#

應用(Application) :

適用於傢俱,木製品等研磨。

General purpose of wood working and furniture.

 砂捲帶 Roll

 環帶 Belt

02



型號(ITEM) : TJ32

基材(Backing) : X-WT Cloth (COTTON)

磨料(Grain) : 氧化鋁Aluminum Oxide

植砂(Coating Density) : 密植砂Close Coated

寬度(Width) : 1345mm

粒號(Grit) : 36#~400#

應用(Application) :

適用於傢俱,木製品等研磨。

General purpose of wood working and furniture.

 砂捲帶 Roll

 環帶 Belt

 圓片 Disc

 砂布輪 Flap Wheel

硬性 + 砂布帶

03



型號(ITEM) : TH32

基材(Backing) : H-WT Cloth (T/C)

磨料(Grain) : 氧化鋁Aluminum Oxide

植砂(Coating Density) : 密植砂Close Coated

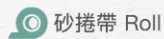
寬度(Width) : 1400mm

粒號(Grit) : 40#~800#

應用(Application) :

適用於金屬製品等研磨，砂布輪專用砂布。

For various metal grinding and specialty flap wheel.



砂捲帶 Roll



砂布輪 Flap Wheel

04
05
06
07
08



型號(ITEM) : TS31W

基材(Backing) : Y-WT Cloth (T/C)

磨料(Grain) : 碳化矽Silicon Carbide

植砂(Coating Density) : 密植砂Close Coated

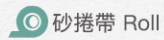
寬度(Width) : 1400mm

粒號(Grit) : 40#~240#

應用(Application) :

適用於玻璃、矽酸鈣板、塑合板、石材、非鐵金屬製品等研磨；可濕磨。

Suitable for glass, calcium silicate, plywood, artificial stone and non ferrous metal grinding. Can be used for wet sanding.



砂捲帶 Roll



環帶 Belt

砂
布
產
品
Abrasive Cloth



型號(ITEM) : 無接頭砂布帶 Seamless Belt

基材(Backing) : Y-WT Cloth (T/C)

磨料(Grain) : 氧化鋁Aluminum Oxide

植砂(Coating Density) : 密植砂Close Coated

尺寸(Size) : 4"x36"、5"x72.5"、6"x60"

粒號(Grit) : 40#~400#

應用(Application) :

特殊無接縫砂布環帶適用於藤、竹、木製品、金屬製品等重力研磨。

Suitable for rattan, bamboo, wooden products and metal grinding.



環帶 Belt



ABRASIVE FLEXIBLE CLOTH



砂捲帶 Roll

環帶 Belt

型號(ITEM) : TF32

基材(Backing) : J-WT Cloth (T/C)

磨料(Grain) : 氧化鋁Aluminum Oxide

植砂(Coating Density) : 密植砂Close Coated

寬度(Width) : 1400mm

粒號(Grit) : 60#~600# (非標準粒度 Non-standard size)

應用(Application) :

適用於機軸類製品、鋁、鋅合金等非鐵金屬製品，木製品等研磨。

Suitable for grinding machine products, aluminum, zinc alloy, other non-ferrous metal products and wood products.

04

砂捲帶 Roll

環帶 Belt



型號(ITEM) : TF32N

基材(Backing) : J-WT Cloth (T/C)

磨料(Grain) : 氧化鋁Aluminum Oxide

植砂(Coating Density) : 密植砂Close Coated、特殊塗層 Special Coated

寬度(Width) : 1400mm

粒號(Grit) : 60#~600# (非標準粒度 Non-standard size)

應用(Application) :

適用於機軸類製品、鋁、鋅合金等非鐵金屬製品研磨；特殊塗層可防堵塞並增加表面散熱。

Suitable for grinding machine products, aluminum, zinc alloy and other non-ferrous metal products. The capability prevents clogging and qualified heat dissipation.

05
06
07
08

軟性⁺ 砂布帶

05



砂捲帶 Roll

環帶 Belt

型號(ITEM) : TJ569

基材(Backing) : J-WT Cloth (T/C)

磨料(Grain) : 碳化矽Silicon Carbide

植砂(Coating Density) : 密植砂Close Coated

寬度(Width) : 1400mm

粒號(Grit) : 60#~1000#

應用(Application) :

適用於銅合金、不鏽鋼、鐵、非鐵金屬製品等研磨。

Suitable for copper, stainless, iron and non ferrous metal.

砂捲帶 Roll

環帶 Belt



型號(ITEM) : TJ569N

基材(Backing) : J-WT Cloth (T/C)

磨料(Grain) : 碳化矽Silicon Carbide

植砂(Coating Density) : 密植砂Close Coated、特殊塗層 Special Coated

寬度(Width) : 1400mm

粒號(Grit) : 60#~1000#

應用(Application) :

適用於銅合金、鋁、軟金屬類製品等研磨；具有磨屑不易堵塞特性。

Suitable for copper, aluminum and soft metal products. The capability prevents clogging and qualified heat dissipation.

06
07
08

砂布產品

Abrasive Cloth



ABRASIVE FLEXIBLE CLOTH



砂捲帶 Roll

環帶 Belt

型號(ITEM) : TJ369

基材(Backing) : J-WT Cloth (T/C)

磨料(Grain) : 氧化鋁Aluminum Oxide

植砂(Coating Density) : 密植砂Close Coated

寬度(Width) : 1400mm

粒號(Grit) : 60#~800#

應用(Application) :

軟性砂布適用於不鏽鋼、鋁、鋅合金等非鐵金屬及金屬製品研磨。

For stainless-steel, aluminum, zinc alloy, non ferrous metal, metal grinding and other metals.

06

砂捲帶 Roll /

環帶 Belt /



型號(ITEM) : TJ369N

基材(Backing) : J-WT Cloth (T/C)

磨料(Grain) : 氧化鋁Aluminum Oxide

植砂(Coating Density) : 密植砂Close Coated、特殊塗層 Special Coated

寬度(Width) : 1400mm

粒號(Grit) : 60#~800#

應用(Application) :

適用於鋁、鋅合金等非鐵金屬製品研磨；特殊塗層可防堵塞並增加表面散熱。

For aluminum, zinc alloy, non ferrous metal and metal grinding. The capability prevents clogging and qualified heat dissipation.

軟性⁺ 砂布帶

07



砂捲帶 Roll

環帶 Belt

型號(ITEM) : TJ936

基材(Backing) : J-WT Cloth (T/C)

磨料(Grain) : 氧化鋁Aluminum Oxide

植砂(Coating Density) : 半密植砂Semi Open

寬度(Width) : 1400mm

粒號(Grit) : 60#~400#

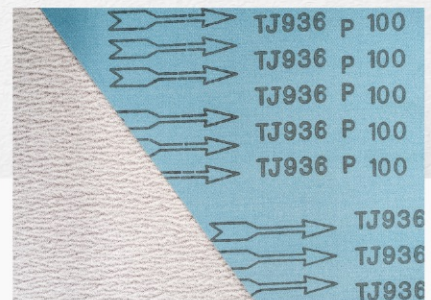
應用(Application) :

適用於鋁壓鑄鐵類、一般金屬製品及木製品等研磨。

Suitable for finishing, aluminum ,die-cast ,iron ,fabricated metals and woodware.

砂捲帶 Roll

環帶 Belt



型號(ITEM) : TJ936N

基材(Backing) : J-WT Cloth (T/C)

磨料(Grain) : 氧化鋁Aluminum Oxide

植砂(Coating Density) : 半密植砂Semi Open、特殊塗層 Special Coated

寬度(Width) : 1400mm

粒號(Grit) : 60#~400#

應用(Application) :

適用於鋁壓鑄鐵類、一般金屬製品、木製品等研磨；特殊塗層可防堵塞並增加表面散熱。

Suitable for finishing operation, cast iron, die casting, metal and woodware. The capability prevents clogging and qualified heat dissipation.

EMERY CLOTH

單張 +
手撕砂布



砂捲帶 Roll

圓片 Disc

單張 Sheet

型號(ITEM) : TL32

基材(Backing) : J-WT Cloth (COTTON)

磨料(Grain) : 氧化鋁Aluminum Oxide

植砂(Coating Density) : 密植砂Close Coated

寬度(Width) : 1170mm

粒號(Grit) : 40#~400#

應用(Application) :

適用於傢俱、木製品、普通金屬類製品等研磨；可手磨。

For furniture, wooden product and non ferrous metal grinding. Can be used by handwork.

08



砂捲帶 Roll

單張 Sheet

型號(ITEM) : TC32

基材(Backing) : J-WT Cloth (COTTON)

磨料(Grain) : 氧化鋁Aluminum Oxide

植砂(Coating Density) : 密植砂Close Coated

寬度(Width) : 1170mm

粒號(Grit) : 40#~240#

應用(Application) :

適用於傢俱、木製品、普通金屬類製品等研磨；可手磨。

For furniture, wooden product and general ferrous metal grinding. Can be used by handwork.

ABRASIVE PAPER 砂紙產品

優異研磨性能，減輕機械磨耗、延長使用年限。

High Grinding Quality for lessening mechanical loads and prolonging service life.





COATED ABRASIVE PAPER

型號(ITEM)：木工砂紙AP

基材(Backing)：C-WT

磨料(Grain)：氧化鋁Aluminum Oxide

植砂(Coating Density)：密植砂Close Coated

寬度(Width)：1170mm

粒號(Grit)：40#~400#

應用(Application)：

適用於木製品、底漆、油漆塗料等手工研磨。

For wooden products and painted surface, handwork is available.



單張 Sheet

型號(ITEM)：木工砂紙NP

基材(Backing)：C-WT

磨料(Grain)：氧化鋁Aluminum Oxide

植砂(Coating Density)：密植砂Close Coated、特殊塗層 Special Coated

寬度(Width)：1170mm

粒號(Grit)：40#~400#

應用(Application)：

適用於木製品、底漆、油漆塗料等手工研磨。

For wooden products, painting and coating surface, handwork is suitable.



圓片 Disc (可作成背絨或背膠 Can be made Velcro or PSA backing)

單張 Sheet

01

型號(ITEM)：耐水砂紙WP

基材(Backing)：C-WT

磨料(Grain)：碳化矽Silicon Carbide

植砂(Coating Density)：密植砂Close Coated

寬度(Width)：1400mm

粒號(Grit)：60#~2000#

應用(Application)：

適用於木製品、底漆、油漆塗料、銲件補土等研磨；可用於乾磨與水磨。

For wooden products, painting and coating surface and automotive body filler. Suitable for both dry and wet sanding.



砂捲帶 Roll

圓片 Disc (可作成背絨或背膠 Can be made Velcro or PSA backing)

單張 Sheet

塗佈 +
砂紙

02



型號(ITEM) : C303

基材(Backing) : C-WT

植砂(Coating Density) : 半密植砂Semi Open、特殊塗層 Special Coated

粒號(Grit) : 60#~600#

磨料(Grain) : 氧化鋁Aluminum Oxide

寬度(Width) : 1370mm

應用(Application) :

適用於木製品、塑膠補土、鈹件補土、粉體烤漆、FRP玻璃纖維、車輪鋼圈等研磨；磨屑不易堵塞。

For wooden, plastic, auto body filler, Powder Coating, fiberglass, wheel rims and specialty anti-clogging.

◎ 圓片 Disc (可作成背絨或背膠 Can be made Velcro or PSA backing)

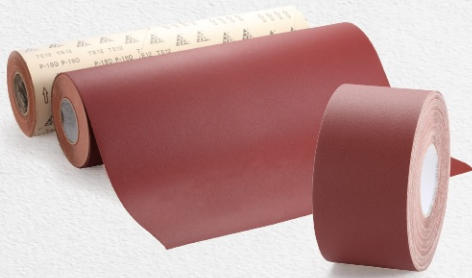
◎ 單張 Sheet





COATED ABRASIVE PAPER

塗佈 +
砂紙



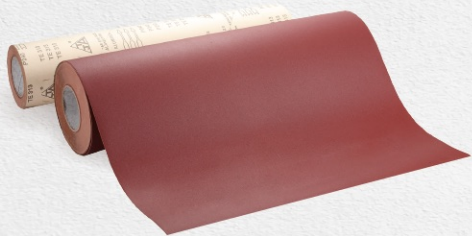
型號(ITEM) : TE12

基材(Backing) : E-WT
植砂(Coating Density) : 半密植砂Semi Open
粒號(Grit) : 40#~400#

磨料(Grain) : 氧化鋁Aluminum Oxide
寬度(Width) : 1270mm

應用(Application) :
適用於皮革、木材、家俱製品等研磨。
For leather, wooden and furniture.

- ◎ 圓片 Disc (可作成背絨或背膠 Can be made Velcro or PSA backing)
- ◎ 砂捲帶 Roll ◄ 環帶 Belt



型號(ITEM) : TE313

基材(Backing) : E-WT
植砂(Coating Density) : 半密植砂Semi Open
粒號(Grit) : 150#~280#

磨料(Grain) : 氧化鋁Aluminum Oxide
寬度(Width) : 1270mm

應用(Application) :
適用於皮革、木材、家俱製品等研磨。
For leather, wooden and furniture.

- ◎ 砂捲帶 Roll ◄ 環帶 Belt

03



型號(ITEM) : TF320

基材(Backing) : F-WT
植砂(Coating Density) : 半密植砂Semi Open
粒號(Grit) : 40#~150#

磨料(Grain) : 氧化鋁Aluminum Oxide
寬度(Width) : 1345mm

應用(Application) :
適用於木材、家俱製品等研磨。
For wooden and furniture.

- ◎ 砂捲帶 Roll ◄ 環帶 Belt

ANTI SLIP TAPE

止滑產品



PLEASE KEEP SAFE DISTANCE





COATED ANTI SLIP TAPE



型號(ITEM) : V-10

基材(Backing) : PVC

基材厚度(Backing Thickness) : 0.1mm

粒號(Grit) : 30#、36#、46#、60#、80#

磨料(Grain) : 氧化鋁Aluminum Oxide

寬度(Width) : 1170mm

應用(Application) : 樓梯台階、廚房、學校、游泳池、浴室、公共場所、車站等。
Stairs, kitchen, school, swimming pool, bathroom, public area and station.

特性(Features) :

- (1) 室外、穿鞋行走區域使用。
 - (2) 表面金剛砂處理，不易掉砂。
 - (3) 背膠為壓克力膠，安裝換貼容易。
- (1) Outdoors usage and footwear walking areas.
 - (2) The surface is treated with emery, so the sand is not easy to come off.
 - (3) The adhesive is acrylic, easy to install and replace.

一般用 + 止滑膠帶

01



- 02
- 03
- 04
- 05
- 06
- 07

止滑系列
Anti Slip Series



TJ SPORTS SERIES

運動 + 系列



型號 (ITEM) : V-15

基材(Backing) : PVC

磨料(Grain) : 碳化矽 Silicon Carbide

基材厚度(Backing Thickness) : 0.15mm

寬度(Width) : 1170mm

粒號(Grit) : 80#

應用(Application) : 滑溜板、滑板車。 Skate Board and Scooter.

特性(Features) :

(1) 防水、耐寒，產品耐候性佳。

(2) 表面碳化矽砂以強力黏著劑處理，砂粒不易脫落。

(3) 背膠為壓克力膠，安裝換貼容易。

(1) Waterproof, cold resistance, and have good weather resistance.

(2) The surface silicon carbide sand is treated with a strong adhesive, and the sand particles are not easy to come off.

(3) The back adhesive is acrylic, easy to install and replace.

02



型號 (ITEM) : V-25

基材(Backing) : PVC

磨料(Grain) : 碳化矽 Silicon Carbide

基材厚度(Backing Thickness) : 0.25mm

寬度(Width) : 1395mm

粒號(Grit) : 80#

應用(Application) : 滑溜板、滑板車。 Skate Board and Scooter.

特性(Features) :

(1) 防水、耐寒，產品耐候性佳。

(2) 表面碳化矽砂以強力黏著劑處理，砂粒不易脫落。

(3) 背膠為壓克力膠，安裝換貼容易。

(1) Waterproof, cold resistance, and have good weather resistance.

(2) The surface silicon carbide sand is treated with a strong adhesive, and the sand particles are not easy to come off.

(3) The back adhesive is acrylic, easy to install and replace.

STRIPES SERIES

條紋 +
系列

03



型號(ITEM)：夜光條膠帶 Glow in the Dark Stripe

基材(Backing)：PVC

基材厚度(Backing Thickness)：0.1mm

粒號(Grit)：60#

磨料(Grain)：氧化鋁Aluminum Oxide

寬度(Width)：50mm

應用(Application)：樓梯、廚房、學校、游泳池、浴室、公共場所、車站等。
Stairs, kitchen, school, swimming pool, bathroom, public area and station.

特性(Features)：

- (1) 室外、穿鞋行走區域使用。
 - (2) 表面金剛砂處理，不易掉砂。
 - (3) 背膠為壓克力膠，安裝換貼容易。
- (1) Use outdoors and in footwear walking areas.
 - (2) The surface is treated with emery to prevent sand loss.
 - (3) The back adhesive is acrylic, easy to install and replace.



型號(ITEM)：反光條膠帶 Reflective Stripe Tape

基材(Backing)：PVC

基材厚度(Backing Thickness)：0.1mm

粒號(Grit)：60#

磨料(Grain)：氧化鋁Aluminum Oxide

寬度(Width)：50mm

應用(Application)：樓梯台階、廚房、學校、游泳池、浴室、公共場所、車站等。
Stairs, kitchen, school, swimming pool, bathroom, public area and station.

特性(Features)：

- (1) 室外、穿鞋行走區域使用。
 - (2) 表面金剛砂處理，不易掉砂。
 - (3) 背膠為壓克力膠，安裝換貼容易。
- (1) Use outdoors and in footwear walking areas.
 - (2) The surface is treated with emery to prevent sand loss.
 - (3) The back adhesive is acrylic, easy to install and replace.

CONFORMABLE ANTI SLIP TAPE

鋁箔底 +
止滑膠帶



04

型號 (ITEM) : A-75

基材(Backing) : Aluminum Foil

磨料(Grain) : 氧化鋁 Aluminum Oxide

基材厚度(Backing Thickness) : 0.075mm

寬度(Width) : 980mm

粒號(Grit) : 36#、46#、60#

應用(Application) : 重工作機械、鐵板、鋁梯、鋁板、公共場所等。

Heavy work machinery, iron plate, aluminum ladder, aluminum plate and public places.

特性(Features) :

- (1) 室外、穿鞋行走區域使用。
- (2) 特殊鋁底材料，可隨不平凹凸面壓出成形。
- (3) 表面金剛砂處理，不易掉砂。
- (4) 背膠為壓克力膠，安裝換貼容易。

- (1) Use outdoor and on footwear walking areas.
- (2) The special aluminum bottom material can be extruded and formed with the uneven surface.
- (3) The surface is treated with emery to prevent sand loss.
- (4) The back adhesive is acrylic glue, easy to install and replace.

NON ABRASIVES SERIES

壓紋 +
系列

05

型號 (ITEM) : P-10-1

基材(Backing) : PVC

基材厚度(Backing Thickness) / 寬度(Width) / 顏色(Color) :

- (1) 0.65mm / 1220mm / 黑(Black), 白(White), 灰(Gray), 透明(Clear)
- (2) 0.82mm / 1143mm / 黑黃(Black/Yellow), 黃(Yellow)
- (3) 0.8mm / 1143mm / 夜光(Luminous)

應用(Application) : 浴室、淋浴間、三溫暖、浴盆、教室之任何平滑表面。

Any smooth surface in bathroom, shower room, sauna, bathtub and classroom.

特性(Features) :

- (1) 室內、赤足行走區域使用。
- (2) 表面不含金剛砂，質地舒適，質感佳。
- (3) 背膠為壓克力膠，安裝換貼容易。
- (4) 可於PVC表面印刷任何圖案增加美感。
- (5) 容易清潔。

- (1) Use indoors and barefoot walking areas.
- (2) The surface does not contain emery, the texture is comfortable and the texture is good.
- (3) The adhesive is acrylic, easy to install and change.
- (4) Any pattern can be printed on the PVC surface to increase the beauty.
- (5) Easy clean.



06
07

止滑系列
Anti Slip Series

型號 (ITEM) : P-10-2

基材(Backing) : PVC

顏色(Color) : 黑(Black), 白(White), 灰(Gray)

基材厚度(Backing Thickness) : 0.55mm

寬度(Width) : 1220mm

應用(Application) : 浴室、淋浴間、三溫暖、浴盆、教室之任何平滑表面。

Any smooth surface in bathroom, shower room, sauna, bathtub and classroom.

特性(Features) :

- (1) 室內、赤足行走區域使用。
- (2) 表面不含金剛砂，質地舒適，質感佳。
- (3) 背膠為壓克力膠，安裝換貼容易。
- (4) 可於PVC表面印刷任何圖案增加美感。

- (1) Use indoors and barefoot walking areas.
- (2) The surface does not contain emery, the texture is comfortable and the texture is good.
- (3) The adhesive is acrylic, easy to install and change.
- (4) Any pattern can be printed on the PVC surface to increase the beauty.





WARNING TAPE SERIES

警示 + 膠帶

型號(ITEM)：高強級反光警示膠帶

基材(Backing)：PVC

基材厚度(Backing Thickness)：0.3mm

顏色(Color)：黃(Yellow), 紅(Red), 白(White), 黑/黃(Black/Yellow)

寬度(Width)：50mm

應用(Application)：卡車, 汽、機車、腳踏車警示貼紙、安全帽貼紙、嬰兒推車、大型舞台、緊急疏散通道指示等。
Trucks, cars, motorcycles, bicycles warning stickers, helmet stickers, baby strollers, large stage and Emergency evacuation route instructions.

特性(Features)：

- (1) 日夜間反光性好，對於行人車輛都有良好的效果。
 - (2) 任何場所或物件可因反射而警惕作用。
 - (3) 背膠為壓克力膠，安裝換貼容易。
- (1) Good reflectivity in day and night, which has good effect on pedestrians and vehicles.
 - (2) Any place or object can be alerted due to reflection.
 - (3) The adhesive is acrylic, easy to install and change.



06

型號(ITEM)：L-15

基材(Backing)：PVC

基材厚度(Backing Thickness)：0.15mm

顏色(Color)：夜光(Luminous)

寬度(Width)：580mm/50mm

應用(Application)：一般警示、標示、動線規劃、停車位、工安等用途。
General warnings, signs, traffic planning, parking spaces, industrial safety and other purposes.

特性(Features)：

- (1) 夜間辨認性好，對於行人車輛都有良好的效果。
 - (2) 背膠為壓克力膠系，容易撕開換貼容易。
 - (3) 可依客戶指定設計圖案印刷。
- (1) Good recognition at night, which has a good effect on pedestrians and vehicles.
 - (2) The adhesive is acrylic, easy to install and change.
 - (3) Design patterns can be printed according to customer's designation.



FLOOR MARKING SERIES

地板 +
標示

07



型號(ITEM) : W-15L

基材(Backing) : PVC

基材厚度(Backing Thickness) : 0.15mm

顏色(Color) : 黃(Yellow), 紅(Red), 藍(Blue), 白(White), 綠(Green), 黑黃(Black/Yellow), 紅白(Red/White)

寬度(Width) : 50mm

應用(Application) : 一般警示、標示, 動線規劃, 停車位, 工安等用途。

General warnings, signs, traffic planning, parking spaces, industrial safety and other purposes.

特性(Features) :

(1) 日夜間辨認性好, 對於行人車輛都有良好的效果。

(2) 背膠為橡膠系, 容易撕開換貼容易。

(1) It has good recognition during day and night, which has good effect on pedestrians and vehicles.

(2) The back adhesive is PU, which is easy to tear and change.



OUR PRODUCTS

- ABRASIVE CLOTH
- ABRASIVE PAPER
- ANTI SLIP TAPE

美化科技，得心應手

BEAUTIFY TECHNOLOGY SIMPLIFY LIFE



雲林縣北港鎮樹腳里過溝81號
No.81 Guogou, Beigang Township Yunlin
County 65150, Taiwan (R.O.C)



+886-5-7833371



+886-5-7822877
+886-5-7826886



sales@tja.com.tw
trade@tja.com.tw



官方網站